

\$586,900 - 124 Hilldowns Drive, Spruce Grove

MLS® #E4430291

\$586,900

3 Bedroom, 2.50 Bathroom, 2,048 sqft

Single Family on 0.00 Acres

Hilldowns, Spruce Grove, AB

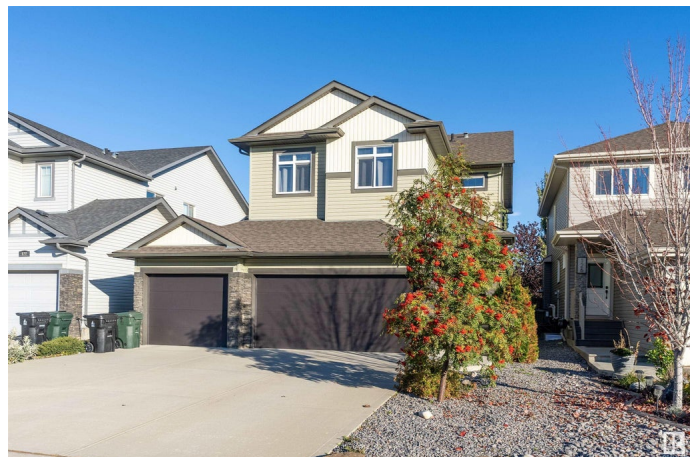
Welcome to your forever home in the highly sought-after community of Hilldowns. Thoughtfully designed & full of warmth, this beautifully crafted home welcomes you with a spacious kitchen featuring generous cabinet space, a large island & a cozy fireplace that anchors the open living area. Upstairs, a bright & versatile bonus room is ideal for movie nights or cheering on your favourite team. Youâ€™ll also find 3 well-sized bedrooms & 2 full bathrooms, including a luxurious 5-piece ensuite that flows into a walk-in closet. The additional bedrooms share a convenient Jack-and-Jill bathroom, perfect for busy mornings. The basement, partially finished with gym flooring, offers flexibility for a home gym, playroom, or future development. Outside, enjoy a large backyard with a deck, pergola, shed & dog run. A 3-car heated garage with EV charger outlet & an extra-long driveway completes the package. Close to parks, trails, schools, shopping & just a quick drive to Edmonton - this home checks every box!

Built in 2013

Essential Information

MLS® # E4430291

Price \$586,900



Bedrooms	3
Bathrooms	2.50
Full Baths	2
Half Baths	1
Square Footage	2,048
Acres	0.00
Year Built	2013
Type	Single Family
Sub-Type	Detached Single Family
Style	2 Storey
Status	Active

Community Information

Address	124 Hilldowns Drive
Area	Spruce Grove
Subdivision	Hilldowns
City	Spruce Grove
County	ALBERTA
Province	AB
Postal Code	T7X 0J1

Amenities

Amenities	Air Conditioner, Deck, Dog Run-Fenced In, No Smoking Home, Parking-Extra, Parking-Plug-Ins, Natural Gas BBQ Hookup, 9 ft. Basement Ceiling
Parking Spaces	6
Parking	Heated, Insulated, Over Sized, Triple Garage Attached

Interior

Interior Features	ensuite bathroom
Appliances	Air Conditioning-Central, Dishwasher-Built-In, Dryer, Garage Control, Garage Opener, Microwave Hood Fan, Oven-Built-In, Refrigerator, Storage Shed, Stove-Electric, Washer, Window Coverings, Garage Heater
Heating	Forced Air-1, Natural Gas
Fireplace	Yes
Fireplaces	Mantel
Stories	2
Has Basement	Yes

Basement Full, Partially Finished

Exterior

Exterior Wood, Stone, Vinyl
Exterior Features Fenced, Flat Site, Golf Nearby, Schools, Shopping Nearby
Roof Asphalt Shingles
Construction Wood, Stone, Vinyl
Foundation Concrete Perimeter

School Information

Elementary Millgrove School
Middle Greystone School
High Spruce Grove Composite

Additional Information

Date Listed April 11th, 2025
Days on Market 8
Zoning Zone 91

DATA IS DEEMED RELIABLE BUT IS NOT GUARANTEED ACCURATE BY THE REALTORS® ASSOCIATION OF EDMONTON. COPYRIGHT 2025 BY THE REALTORS® ASSOCIATION OF EDMONTON. ALL RIGHTS RESERVED.Trademarks are owned or controlled by the Canadian Real Estate Association (CREA) and identify real estate professionals who are members of CREA (REALTOR®, REALTORS®) and/or the quality of services they provide (MLS®, Multiple Listing Service®)
Listing information last updated on April 19th, 2025 at 12:32pm MDT