

Courtesy Of Yad Dhillon Of Nationwide Realty Corp

\$599,900 - 1914 155 Avenue, Edmonton

MLS® #E4430197

\$599,900

5 Bedroom, 4.00 Bathroom, 1,742 sqft

Single Family on 0.00 Acres

Gorman, Edmonton, AB

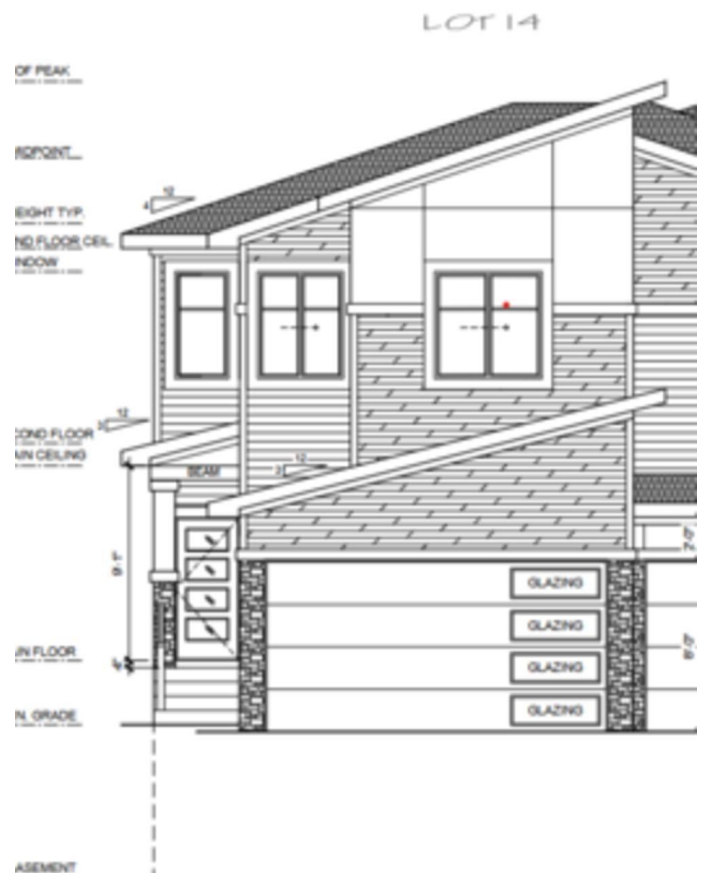
****MAIN FLOOR DEN**2 BED LEGAL BASEMENT SUITE**SPICE KITCHEN + MAIN KITCHEN + KITCHEN IN BASEMENT**Welcome to this stunning half duplex in the heart of Gorman, North Edmonton! With a finished legal basement suite, this home offers endless possibilities for extra income or comfortable multi-generational living. The main floor boasts a bright and airy open-to-below concept, a spacious living room, a dining area, and a convenient side entry to the basement. You'll also find a versatile den with a 3-piece ensuite bathroom and a practical spice kitchen for all your culinary adventures. Upstairs, relax in the serene primary suite featuring a luxurious 5-piece ensuite and walk-in closet.two additional bedrooms, a stylish 3-piece bathroom, and a laundry room complete this level. The legal basement suite comes with two bedrooms, its own kitchen, living space, laundry, and private entrance. ****House under Construction**approx ready within 3-4 months******

Built in 2025

Essential Information

MLS® # E4430197

Price \$599,900



Bedrooms	5
Bathrooms	4.00
Full Baths	4
Square Footage	1,742
Acres	0.00
Year Built	2025
Type	Single Family
Sub-Type	Half Duplex
Style	2 Storey
Status	Active

Community Information

Address	1914 155 Avenue
Area	Edmonton
Subdivision	Gorman
City	Edmonton
County	ALBERTA
Province	AB
Postal Code	T5Y 4H8

Amenities

Amenities	Carbon Monoxide Detectors, Detectors Smoke
Parking	Double Garage Attached

Interior

Interior Features	ensuite bathroom
Appliances	See Remarks
Heating	Forced Air-1, Natural Gas
Fireplace	Yes
Fireplaces	None
Stories	3
Has Basement	Yes
Basement	Full, Finished

Exterior

Exterior	Wood, Stone, Vinyl
Exterior Features	Commercial, Golf Nearby, Public Transportation, Schools, Shopping Nearby, View City
Roof	Asphalt Shingles

Construction Wood, Stone, Vinyl
Foundation Concrete Perimeter

Additional Information

Date Listed April 10th, 2025
Days on Market 10
Zoning Zone 03

DATA IS DEEMED RELIABLE BUT IS NOT GUARANTEED ACCURATE BY THE REALTORS® ASSOCIATION OF EDMONTON. COPYRIGHT 2025 BY THE REALTORS® ASSOCIATION OF EDMONTON. ALL RIGHTS RESERVED. Trademarks are owned or controlled by the Canadian Real Estate Association (CREA) and identify real estate professionals who are members of CREA (REALTOR®, REALTORS®) and/or the quality of services they provide (MLS®, Multiple Listing Service®)

Listing information last updated on April 20th, 2025 at 1:32pm MDT