

## \$560,000 - 10357 149 Street, Edmonton

MLS® #E4429941

**\$560,000**

4 Bedroom, 3.50 Bathroom, 1,543 sqft

Single Family on 0.00 Acres

Grovenor, Edmonton, AB

Great investment opportunity! Grovenor is one of the most desired neighbourhoods in the city and this gorgeous half duplex is located there. In addition, this property is located within walking distance to the new LRT line. Easy access to downtown and also 10 minutes away from West Edmonton Mall. Inside the unit, you will find an open concept floor plan along with a very modern approach to the carefully chosen finishings highlighted by laminate flooring, a large kitchen with a ceramic backsplash and granite countertops with stainless steel appliances and modern looking white cabinetry. Heading upstairs you'll find a wide stairwell easy for moving furniture that leads to three large bedroom and two full bathrooms. Bathrooms feature ceramic tile while the bedrooms have thick carpet. Master bedroom is facing east while the other two bedrooms are facing west. A truly remarkable, can't miss property! Legal basement suite comes with one bedroom and bathroom and plenty of living space.

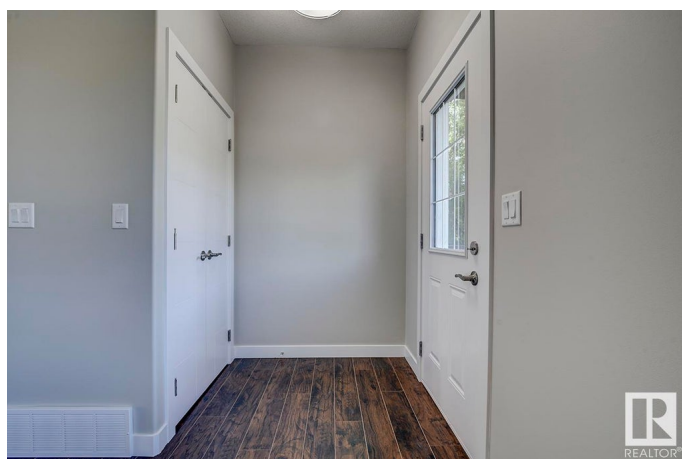
Built in 2018

### Essential Information

MLS® # E4429941

Price \$560,000

Bedrooms 4



Bathrooms	3.50
Full Baths	3
Half Baths	1
Square Footage	1,543
Acres	0.00
Year Built	2018
Type	Single Family
Sub-Type	Half Duplex
Style	2 Storey
Status	Active

### Community Information

Address	10357 149 Street
Area	Edmonton
Subdivision	Grovenor
City	Edmonton
County	ALBERTA
Province	AB
Postal Code	T5P 1L4

### Amenities

Amenities	Carbon Monoxide Detectors, Ceiling 9 ft., Closet Organizers, Deck, Detectors Smoke, No Animal Home, No Smoking Home, Smart/Program. Thermostat, Infill Property, HRV System
Parking	Double Garage Detached

### Interior

Interior Features	ensuite bathroom
Appliances	Dishwasher-Built-In, Dryer, Garage Opener, Hood Fan, Refrigerator, Stove-Electric, Washer
Heating	Forced Air-1, Natural Gas
Stories	3
Has Basement	Yes
Basement	Full, Finished

### Exterior

Exterior	Wood, Stone, Vinyl
Exterior Features	Back Lane, Fenced, Flat Site, Playground Nearby, Public Transportation, Schools

Roof	Asphalt Shingles
Construction	Wood, Stone, Vinyl
Foundation	Concrete Perimeter

**Additional Information**

Date Listed	April 8th, 2025
Days on Market	8
Zoning	Zone 21

DATA IS DEEMED RELIABLE BUT IS NOT GUARANTEED ACCURATE BY THE REALTORS® ASSOCIATION OF EDMONTON. COPYRIGHT 2025 BY THE REALTORS® ASSOCIATION OF EDMONTON. ALL RIGHTS RESERVED.Trademarks are owned or controlled by the Canadian Real Estate Association (CREA) and identify real estate professionals who are members of CREA (REALTOR®, REALTORS®) and/or the quality of services they provide (MLS®, Multiple Listing Service®)

Listing information last updated on April 16th, 2025 at 12:18pm MDT