

\$599,900 - 2574 Hanna Crescent, Edmonton

MLS® #E4429237

\$599,900

3 Bedroom, 2.50 Bathroom, 1,881 sqft

Single Family on 0.00 Acres

Haddow, Edmonton, AB

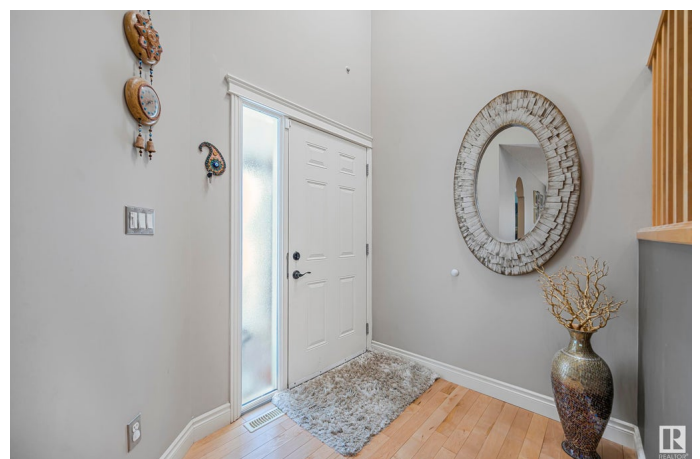
MUST BE SEEN IN SOUTH EDMONTON HADDOW! This beautiful 3 bdrm 3 bath almost 1900 sq/ft 2 storey w/ vaulted ceilings in quite location NEW FURNACE/H2O TANK/CENTRAL AIR! Greeting you is a Big open foyer. Gleaming maple hardwood floors throughout the main floor. Formal dining room 2 pce bath & main floor laundry. Tons of windows for lots of natural lighting! Open concept spacious kitchen w/ island & breakfast bar and living room w/ fire place! Kitchen nook, looking out to the beautifully landscaped backyard will an amazing deck! Upstairs enjoy the huge Master suite w/ 4 piece tiled ensuite w/ soaker tub. Spacious walk-in closet. 2 more bright and spacious bedrooms. Full main bathroom. Unspoiled basement, waiting for your personal touches to make it your own. Double attached garage leads to the laundry room and mudroom. Located on a quiet street and walking distant the local park. Minutes from the Currents of Windermere Major shopping, Restaurants destination. Minutes to schools & Terwillegar Rec centre.

Built in 2006

Essential Information

MLS® # E4429237

Price \$599,900



Bedrooms	3
Bathrooms	2.50
Full Baths	2
Half Baths	1
Square Footage	1,881
Acres	0.00
Year Built	2006
Type	Single Family
Sub-Type	Detached Single Family
Style	2 Storey
Status	Active

Community Information

Address	2574 Hanna Crescent
Area	Edmonton
Subdivision	Haddow
City	Edmonton
County	ALBERTA
Province	AB
Postal Code	T6R 3P7

Amenities

Amenities	Air Conditioner, Deck, Hot Water Natural Gas, No Animal Home, No Smoking Home
Parking Spaces	4
Parking	Double Garage Attached

Interior

Interior Features	ensuite bathroom
Appliances	Air Conditioning-Central, Dishwasher-Built-In, Dryer, Garage Opener, Hood Fan, Refrigerator, Stove-Electric, Washer, Window Coverings
Heating	Forced Air-1, Natural Gas
Fireplace	Yes
Fireplaces	Mantel, Tile Surround
Stories	2
Has Basement	Yes
Basement	Full, Unfinished

Exterior

Exterior	Wood, Stone, Vinyl
Exterior Features	Fenced, Flat Site, Landscaped, No Back Lane, Playground Nearby, Private Setting, Public Transportation, Schools, Shopping Nearby, Ski Hill Nearby
Roof	Asphalt Shingles
Construction	Wood, Stone, Vinyl
Foundation	Concrete Perimeter

Additional Information

Date Listed	April 4th, 2025
Days on Market	14
Zoning	Zone 14

DATA IS DEEMED RELIABLE BUT IS NOT GUARANTEED ACCURATE BY THE REALTORS® ASSOCIATION OF EDMONTON. COPYRIGHT 2025 BY THE REALTORS® ASSOCIATION OF EDMONTON. ALL RIGHTS RESERVED. Trademarks are owned or controlled by the Canadian Real Estate Association (CREA) and identify real estate professionals who are members of CREA (REALTOR®, REALTORS®) and/or the quality of services they provide (MLS®, Multiple Listing Service®)

Listing information last updated on April 18th, 2025 at 7:17pm MDT