

Courtesy Of Lori Hunt Of RE/MAX River City

\$409,000 - 18729 50 Avenue, Edmonton

MLS® #E4428972

\$409,000

3 Bedroom, 2.00 Bathroom, 972 sqft
Single Family on 0.00 Acres

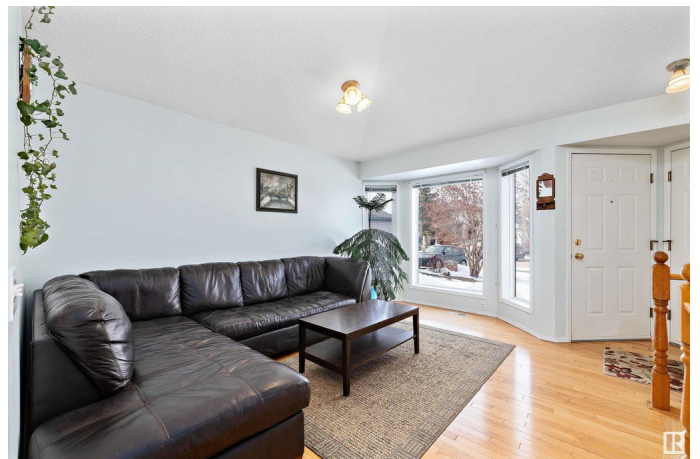
Jamieson Place, Edmonton, AB

Turn the key and step into this meticulously maintained West Edmonton bungalow—an absolute gem with serious curb appeal and zero compromises. Featuring 3 spacious bedrooms, 2 full bathrooms, and a fully finished basement, this home delivers comfort and versatility in every corner. Gleaming hardwood floors and oversized windows flood the space with natural light, while clever storage solutions keep everything tucked away. The low-maintenance yard is a dream—fully fenced with a lush vegetable garden ready for your green thumb. Shingles replaced in 2019 with a 50-year warranty mean peace of mind for decades to come. Located mere minutes from the Henday, Whitemud, top-rated schools, scenic walking trails, transit, and every convenience imaginable. Whether you’re upsizing, downsizing, or right-sizing—this one hits the mark.

Built in 1999

Essential Information

MLS® #	E4428972
Price	\$409,000
Bedrooms	3
Bathrooms	2.00
Full Baths	2



Square Footage	972
Acres	0.00
Year Built	1999
Type	Single Family
Sub-Type	Detached Single Family
Style	Bungalow
Status	Active

Community Information

Address	18729 50 Avenue
Area	Edmonton
Subdivision	Jamieson Place
City	Edmonton
County	ALBERTA
Province	AB
Postal Code	T6M 2R7

Amenities

Amenities	On Street Parking, Deck, Detectors Smoke, No Animal Home, No Smoking Home, Vinyl Windows
Parking Spaces	4
Parking	Double Garage Attached

Interior

Appliances	Dishwasher-Built-In, Fan-Ceiling, Garage Control, Garage Opener, Hood Fan, Refrigerator, Stove-Electric, Window Coverings
Heating	Forced Air-1, Natural Gas
Stories	2
Has Basement	Yes
Basement	Full, Finished

Exterior

Exterior	Wood, Brick, Vinyl
Exterior Features	Fenced, Golf Nearby, Low Maintenance Landscape, Picnic Area, Playground Nearby, Public Transportation, Schools, Shopping Nearby, Treed Lot, Vegetable Garden
Roof	Asphalt Shingles
Construction	Wood, Brick, Vinyl
Foundation	Concrete Perimeter

School Information

Elementary	Good Shepherd;MichaelKoste
Middle	H.E. Beriault
High	Arch Oscar Romero

Additional Information

Date Listed	April 3rd, 2025
Days on Market	6
Zoning	Zone 20

DATA IS DEEMED RELIABLE BUT IS NOT GUARANTEED ACCURATE BY THE REALTORS® ASSOCIATION OF EDMONTON. COPYRIGHT 2025 BY THE REALTORS® ASSOCIATION OF EDMONTON. ALL RIGHTS RESERVED. Trademarks are owned or controlled by the Canadian Real Estate Association (CREA) and identify real estate professionals who are members of CREA (REALTOR®, REALTORS®) and/or the quality of services they provide (MLS®, Multiple Listing Service®)

Listing information last updated on April 8th, 2025 at 11:02pm MDT