

# \$559,900 - 1324 Siskin Wynd, Edmonton

MLS® #E4428928

**\$559,900**

4 Bedroom, 3.50 Bathroom, 1,640 sqft  
Single Family on 0.00 Acres

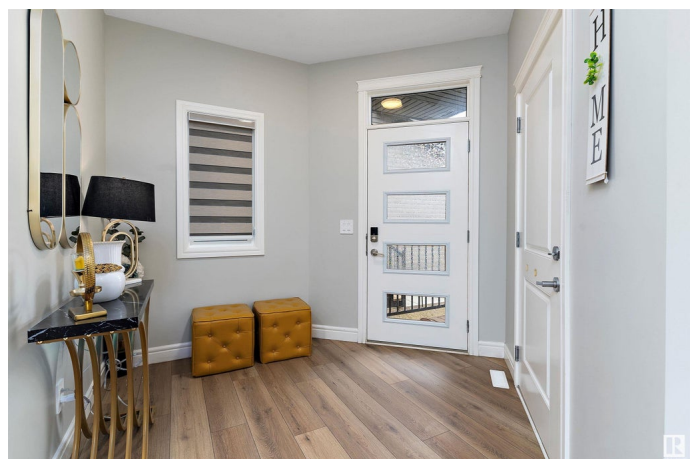
Kinglet Gardens, Edmonton, AB

Welcome to your dream home in the desirable Kinglet Gardens! This stunning Front garage duplex home offers a perfect south east-facing location and side entry door. With 9' ceilings and an open concept main floor, this home is designed for entertaining and comfort. The upgraded kitchen features 39" cabinets and quartz countertops, providing a stylish and functional space for all your culinary needs. The upper floor features a flex area, convenient laundry room, full 4-piece bathroom, 2 large bedrooms, and a master suite with walk-in closet and ensuite. The master suite is the perfect place to unwind after a long day. Other highlights of this amazing home include FULL LANDSCAPING, a double attached garage, upgraded appliances, high efficiency furnace, and triple pane windows, plus recently finished in-law basement suite with Kitchen offer the potential for added income or the perfect space for extended family. Buy with confidence. Built by Rohit.

Built in 2023

## Essential Information

MLS® #	E4428928
Price	\$559,900
Bedrooms	4



Bathrooms	3.50
Full Baths	3
Half Baths	1
Square Footage	1,640
Acres	0.00
Year Built	2023
Type	Single Family
Sub-Type	Half Duplex
Style	2 Storey
Status	Active

### **Community Information**

Address	1324 Siskin Wynd
Area	Edmonton
Subdivision	Kinglet Gardens
City	Edmonton
County	ALBERTA
Province	AB
Postal Code	T5S 0P9

### **Amenities**

Amenities	Carbon Monoxide Detectors, Ceiling 9 ft., Detectors Smoke, No Animal Home, No Smoking Home, Smart/Program. Thermostat
Parking Spaces	4
Parking	Double Garage Attached

### **Interior**

Interior Features	ensuite bathroom
Appliances	Garage Opener, Microwave Hood Fan, Stove-Electric, Stove-Gas, Window Coverings, Dryer-Two, Refrigerators-Two, Washers-Two, Dishwasher-Two
Heating	Forced Air-1, Natural Gas
Stories	3
Has Basement	Yes
Basement	Full, Finished

### **Exterior**

Exterior	Wood, Stone, Vinyl
Exterior Features	Landscaped, Park/Reserve, Public Transportation, Schools, Shopping

	Nearby
Roof	Asphalt Shingles
Construction	Wood, Stone, Vinyl
Foundation	Concrete Perimeter

### **Additional Information**

Date Listed April 3rd, 2025

Days on Market 13

Zoning Zone 59

DATA IS DEEMED RELIABLE BUT IS NOT GUARANTEED ACCURATE BY THE REALTORS® ASSOCIATION OF EDMONTON. COPYRIGHT 2025 BY THE REALTORS® ASSOCIATION OF EDMONTON. ALL RIGHTS RESERVED. Trademarks are owned or controlled by the Canadian Real Estate Association (CREA) and identify real estate professionals who are members of CREA (REALTOR®, REALTORS®) and/or the quality of services they provide (MLS®, Multiple Listing Service®)

Listing information last updated on April 16th, 2025 at 12:18pm MDT