

Courtesy Of Mani Bagga and Gurpreet S Ghatehora Of Royal Lepage Magna

## \$648,800 - 10221 151 Street, Edmonton

MLS® #E4428663

**\$648,800**

6 Bedroom, 4.00 Bathroom, 2,037 sqft  
Single Family on 0.00 Acres

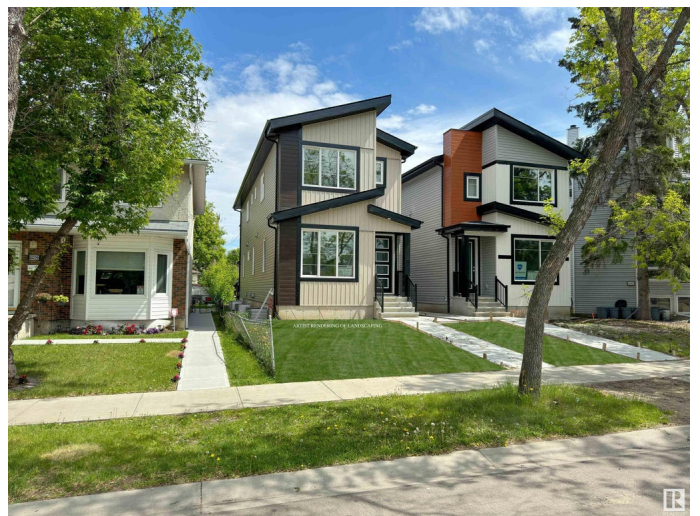
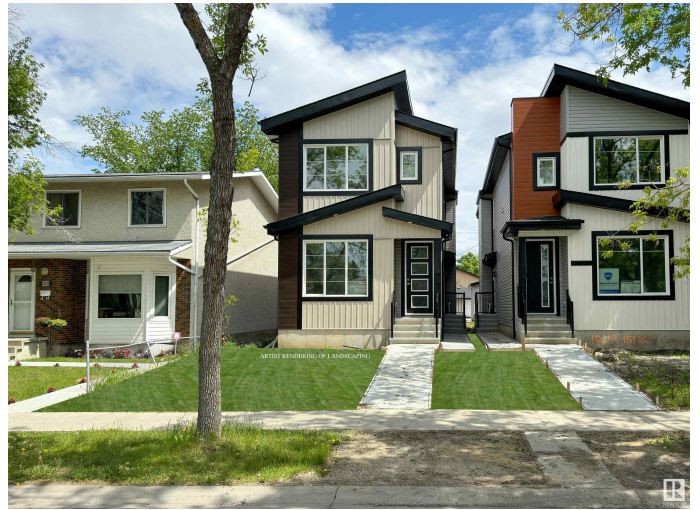
Canora, Edmonton, AB

**LEGAL SUITE!!** This stunning new build is located a quiet, tree-lined street boasting almost 2900 sqft of total living space! Meticulously-built home features 6 large **BEDROOMS** & 4 full baths, with a **SEPARATE ENTRANCE** to access the **FULLY FINISHED BASEMENT w/ SECOND KITCHEN!** You are welcomed by the spacious foyer leading you to the large living room w/ a feature wall & modern electric fireplace durable vinyl plank floors, a 4PC BATH & BEDROOM! The dining gives you the luxury of high-gloss **MARBLE FLOORING, MODERN CABINETRY, A BREAKFAST NOOK, GLASS TILE BACKSPLASH & Quartz COUNTERTOPS!** The eating area leads you to the deck, has double **DETACHED GARAGE!** Upstairs features a **LOFT/BONUS ROOM**, 3 large bedrooms including the Primary with 5-pc ensuite + 1 common bath. **LEGAL SUTIE BASEMENT** has a **SEPARATE SIDE ENTRANCE**, 2 large bedrms, 1 full bath, a **KITCHEN**, a **REC ROOM & utility room!** Seller offers \$5000 Appliance Credit & **NEW HOME WARRANTY!** Outside pics are digitally altered. Some pictures are virtually staged.

Built in 2024

### Essential Information

MLS® #                      E4428663



Price	\$648,800
Bedrooms	6
Bathrooms	4.00
Full Baths	4
Square Footage	2,037
Acres	0.00
Year Built	2024
Type	Single Family
Sub-Type	Detached Single Family
Style	2 Storey
Status	Active

### **Community Information**

Address	10221 151 Street
Area	Edmonton
Subdivision	Canora
City	Edmonton
County	ALBERTA
Province	AB
Postal Code	T5P 1T6

### **Amenities**

Amenities	Closet Organizers, Deck, No Animal Home, No Smoking Home
Parking Spaces	2
Parking	Double Garage Detached

### **Interior**

Interior Features	ensuite bathroom
Appliances	Garage Control, Garage Opener, Hood Fan
Heating	Forced Air-2, Natural Gas
Fireplace	Yes
Fireplaces	Marble Surround
Stories	3
Has Basement	Yes
Basement	Full, Finished

### **Exterior**

Exterior	Wood, Vinyl
Exterior Features	Back Lane, Fenced, Public Transportation, Schools, Shopping Nearby

Roof	Asphalt Shingles
Construction	Wood, Vinyl
Foundation	Concrete Perimeter

### **School Information**

Elementary	Brightview School
Middle	Brittania School
High	Ross Shephard School

### **Additional Information**

Date Listed	April 2nd, 2025
Days on Market	9
Zoning	Zone 21

DATA IS DEEMED RELIABLE BUT IS NOT GUARANTEED ACCURATE BY THE REALTORS® ASSOCIATION OF EDMONTON. COPYRIGHT 2025 BY THE REALTORS® ASSOCIATION OF EDMONTON. ALL RIGHTS RESERVED. Trademarks are owned or controlled by the Canadian Real Estate Association (CREA) and identify real estate professionals who are members of CREA (REALTOR®, REALTORS®) and/or the quality of services they provide (MLS®, Multiple Listing Service®)

Listing information last updated on April 11th, 2025 at 3:17am MDT