

## **\$579,900 - 13730 161a Avenue, Edmonton**

MLS® #E4427952

**\$579,900**

3 Bedroom, 2.50 Bathroom, 2,355 sqft

Single Family on 0.00 Acres

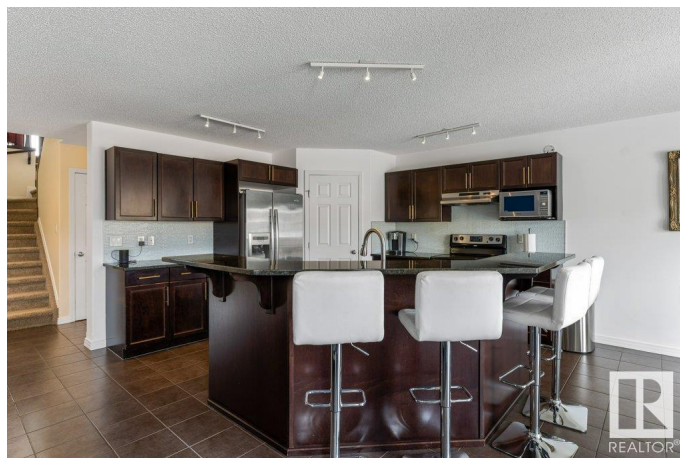
Carlton, Edmonton, AB

Nestled in an incredible location, this stunning Bedrock Homes build sits on a massive 8,300+ sq. ft. pie-shaped lot! Offering over 3,300 sq. ft. of living space, the open floor plan features a main floor den/office, a spacious kitchen with stainless steel appliances, ample counter and cupboard space, raised eating island, plus a walk-through pantry, all overlooking the great room with a cozy gas fireplace and hardwood flooring. Upstairs boasts a large bonus room with tons of natural light, an extra-large primary suite with a good size closet & 4-pc ensuite with separate shower, plus two additional bedrooms. The unspoiled basement is ready for your personal touch! Step outside to an extra-large deck, a huge yard with raised garden beds, and a storage shed—perfect for family living. Just steps from schools & parks in a fantastic, family-friendly community! Complete with A/C and a double attached heated garage, this home is a must-see!

Built in 2010

### **Essential Information**

MLS® #	E4427952
Price	\$579,900
Bedrooms	3
Bathrooms	2.50



Full Baths	2
Half Baths	1
Square Footage	2,355
Acres	0.00
Year Built	2010
Type	Single Family
Sub-Type	Detached Single Family
Style	2 Storey
Status	Active

### Community Information

Address	13730 161a Avenue
Area	Edmonton
Subdivision	Carlton
City	Edmonton
County	ALBERTA
Province	AB
Postal Code	T6V 0E1

### Amenities

Amenities	Ceiling 9 ft., Deck
Parking Spaces	4
Parking	Double Garage Attached, Heated

### Interior

Interior Features	ensuite bathroom
Appliances	Air Conditioning-Central, Dishwasher-Built-In, Dryer, Garage Control, Garage Opener, Microwave Hood Fan, Refrigerator, Stove-Electric, Washer, Window Coverings, Garage Heater
Heating	Forced Air-1, Natural Gas
Fireplace	Yes
Fireplaces	Tile Surround
Stories	2
Has Basement	Yes
Basement	Full, Unfinished

### Exterior

Exterior	Wood, Stone, Vinyl
Exterior Features	Fenced, Landscaped, Park/Reserve, Playground Nearby, Public

	Transportation, Schools, Shopping Nearby
Roof	Asphalt Shingles
Construction	Wood, Stone, Vinyl
Foundation	Concrete Perimeter

### School Information

Elementary	Elizabeth Finch
Middle	Elizabeth Finch
High	Ross Sheppard

### Additional Information

Date Listed	March 28th, 2025
Days on Market	21
Zoning	Zone 27

DATA IS DEEMED RELIABLE BUT IS NOT GUARANTEED ACCURATE BY THE REALTORS® ASSOCIATION OF EDMONTON. COPYRIGHT 2025 BY THE REALTORS® ASSOCIATION OF EDMONTON. ALL RIGHTS RESERVED. Trademarks are owned or controlled by the Canadian Real Estate Association (CREA) and identify real estate professionals who are members of CREA (REALTOR®, REALTORS®) and/or the quality of services they provide (MLS®, Multiple Listing Service®)

Listing information last updated on April 18th, 2025 at 11:32am MDT