

\$825,000 - 9125 81 Avenue, Edmonton

MLS® #E4427778

\$825,000

3 Bedroom, 3.50 Bathroom, 1,698 sqft
Single Family on 0.00 Acres

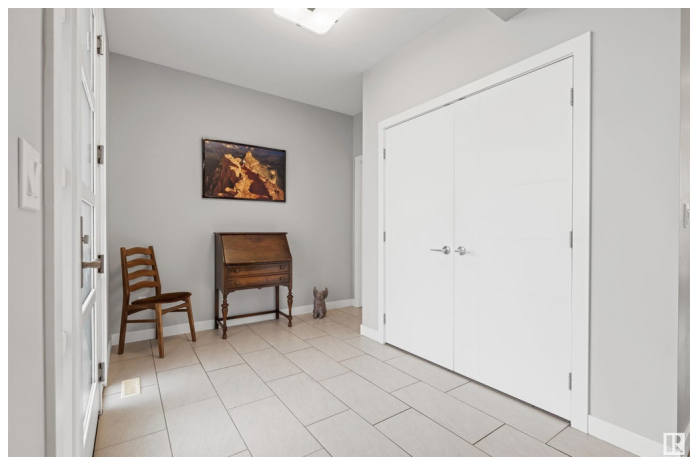
King Edward Park, Edmonton, AB

IN THE BEST POCKET of King Edward Park, this stunning 2016-built contemporary home offers the perfect blend of modern elegance and prime location! Just steps from Mill Creek Ravine, this lightly lived-in gem sits on a full-sized south-facing lot, bathing the home in natural light. Step inside to a spacious foyer leading to an open-concept main floor with gleaming hardwood floors, a chef's dream island kitchen, walk-in pantry, and a stylish powder room. Upstairs, the luxurious primary suite boasts a walk-in closet, while an additional bedroom, bonus room, second-floor laundry, and balcony doors with phantom screens add to the home's charm. The fully finished basement features a sprawling Rec room, an extra bedroom, and a full bath—ideal for guests or family. Outside, the landscaped south-facing yard with a brick patio provides a private retreat. This is the perfect home for those seeking contemporary style, generous space, and an unbeatable location!

Built in 2016

Essential Information

MLS® #	E4427778
Price	\$825,000
Bedrooms	3
Bathrooms	3.50



Full Baths	3
Half Baths	1
Square Footage	1,698
Acres	0.00
Year Built	2016
Type	Single Family
Sub-Type	Detached Single Family
Style	2 Storey
Status	Active

Community Information

Address	9125 81 Avenue
Area	Edmonton
Subdivision	King Edward Park
City	Edmonton
County	ALBERTA
Province	AB
Postal Code	T6C 0W9

Amenities

Amenities	Patio
Parking	Double Garage Detached

Interior

Interior Features	ensuite bathroom
Appliances	Dishwasher-Built-In, Dryer, Garage Opener, Hood Fan, Refrigerator, Stove-Gas, Washer, Window Coverings, Wine/Beverage Cooler, Microwave Hood Fan-Two
Heating	Forced Air-1, Natural Gas
Fireplace	Yes
Fireplaces	Wall Mount
Stories	3
Has Basement	Yes
Basement	Full, Finished

Exterior

Exterior	Wood, Stucco
Exterior Features	Fenced, Public Transportation
Roof	Asphalt Shingles

Construction Wood, Stucco
Foundation Concrete Perimeter

Additional Information

Date Listed March 27th, 2025
Days on Market 8
Zoning Zone 17

DATA IS DEEMED RELIABLE BUT IS NOT GUARANTEED ACCURATE BY THE REALTORS® ASSOCIATION OF EDMONTON. COPYRIGHT 2025 BY THE REALTORS® ASSOCIATION OF EDMONTON. ALL RIGHTS RESERVED. Trademarks are owned or controlled by the Canadian Real Estate Association (CREA) and identify real estate professionals who are members of CREA (REALTOR®, REALTORS®) and/or the quality of services they provide (MLS®, Multiple Listing Service®)

Listing information last updated on April 4th, 2025 at 3:47am MDT