

\$379,000 - 10517 114 Avenue, Edmonton

MLS® #E4427281

\$379,000

3 Bedroom, 2.50 Bathroom, 1,265 sqft
Condo / Townhouse on 0.00 Acres

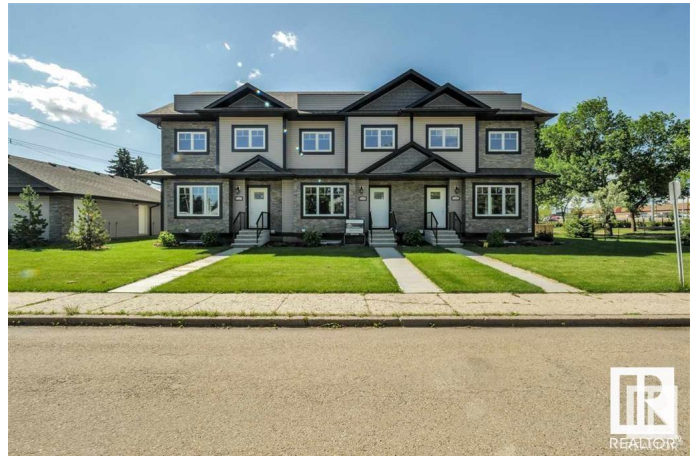
Spruce Avenue, Edmonton, AB

LOCATION LOCATION LOCATION...NO CONDO FEE and ROOF TOP PATIO!!! NICE 2 and a half storey townhouse/CONDO with 3 bedrooms, 2.5 bathrooms and single detached garage! Main floor features open floor plan with all stainless steel appliances, hardwood floors, granite countertops, half bathroom and stackable washer and dryer. Upstairs features master bedroom with walk in closet and ENSUITE BATHROOM. 2 more bedrooms plus full bathroom and plenty of closet space! Another floor UP and enjoy BONUS AREA with ROOF TOP PATIO! Basement is ready for your development or extra storage! Fully landscaped property literally across the street from Kingsway mall and NAIT! Perfect for the first time home buyer or great investment property!

Built in 2015

Essential Information

| | |
|----------------|-----------|
| MLS® # | E4427281 |
| Price | \$379,000 |
| Bedrooms | 3 |
| Bathrooms | 2.50 |
| Full Baths | 2 |
| Half Baths | 1 |
| Square Footage | 1,265 |
| Acres | 0.00 |



| | |
|------------|-------------------|
| Year Built | 2015 |
| Type | Condo / Townhouse |
| Sub-Type | Townhouse |
| Style | 2 Storey |
| Status | Active |

Community Information

| | |
|-------------|------------------|
| Address | 10517 114 Avenue |
| Area | Edmonton |
| Subdivision | Spruce Avenue |
| City | Edmonton |
| County | ALBERTA |
| Province | AB |
| Postal Code | T5H 3J6 |

Amenities

| | |
|-----------|------------------------|
| Amenities | No Smoking Home |
| Parking | Single Garage Detached |

Interior

| | |
|-------------------|--|
| Interior Features | ensuite bathroom |
| Appliances | Dishwasher-Built-In, Dryer, Refrigerator, Stove-Electric, Washer, Microwave Hood Fan-Two |
| Heating | Forced Air-1, Natural Gas |
| Stories | 2 |
| Has Basement | Yes |
| Basement | Full, Unfinished |

Exterior

| | |
|-------------------|---------------------------|
| Exterior | Wood, Vinyl |
| Exterior Features | Low Maintenance Landscape |
| Roof | Asphalt Shingles |
| Construction | Wood, Vinyl |
| Foundation | Concrete Perimeter |

Additional Information

| | |
|----------------|------------------|
| Date Listed | March 24th, 2025 |
| Days on Market | 11 |
| Zoning | Zone 08 |

DATA IS DEEMED RELIABLE BUT IS NOT GUARANTEED ACCURATE BY THE REALTORS® ASSOCIATION OF EDMONTON. COPYRIGHT 2025 BY THE REALTORS® ASSOCIATION OF EDMONTON. ALL RIGHTS RESERVED. Trademarks are owned or controlled by the Canadian Real Estate Association (CREA) and identify real estate professionals who are members of CREA (REALTOR®, REALTORS®) and/or the quality of services they provide (MLS®, Multiple Listing Service®)

Listing information last updated on April 4th, 2025 at 2:47pm MDT