

Courtesy Of Logan Patterson Of Logic Realty

# \$139,000 - 311 1620 48 Street, Edmonton

MLS® #E4425278

**\$139,000**

1 Bedroom, 1.00 Bathroom, 652 sqft  
Condo / Townhouse on 0.00 Acres

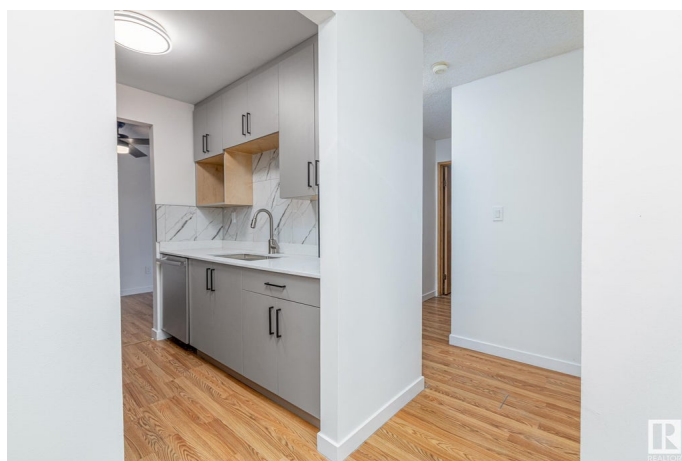
Pollard Meadows, Edmonton, AB

RENOVATED! 1 Bed 1 bath with QUARTZ countertops, new stainless steel appliances, a completely redone bathroom including a new tub and surround. Overlooking a quiet street, with mature trees you'll love the peace and sunlight from your large east facing patio. Other unit perks include a large storage room, vinyl windows and new ceiling height kitchen cabinets! Condo complex perks include LOW CONDO FEES, an Elevator, same floor laundry, one ENERGIZED Stall, and a security door. Located close to walking trails, a park, Pollard Meadows Elementary school, and a short drive to Millwoods Transit Centre!

Built in 1981

## Essential Information

MLS® #	E4425278
Price	\$139,000
Bedrooms	1
Bathrooms	1.00
Full Baths	1
Square Footage	652
Acres	0.00
Year Built	1981
Type	Condo / Townhouse
Sub-Type	Lowrise Apartment
Style	Single Level Apartment



Status Active

### Community Information

Address 311 1620 48 Street  
Area Edmonton  
Subdivision Pollard Meadows  
City Edmonton  
County ALBERTA  
Province AB  
Postal Code T6L 5B1

### Amenities

Amenities On Street Parking, Deck, Intercom, No Animal Home, No Smoking Home, Parking-Plug-Ins, Parking-Visitor, Security Door, Storage-In-Suite, Vinyl Windows  
Parking Stall

### Interior

Appliances Dishwasher-Built-In, Hood Fan, Refrigerator, Stove-Electric, Window Coverings  
Heating Baseboard, Natural Gas  
# of Stories 4  
Stories 1  
Has Basement Yes  
Basement None, No Basement

### Exterior

Exterior Wood, Stucco, Vinyl  
Exterior Features No Through Road, Playground Nearby, Private Setting, Public Transportation  
Roof Flat  
Construction Wood, Stucco, Vinyl  
Foundation Concrete Perimeter

### Additional Information

Date Listed March 12th, 2025  
Days on Market 24  
Zoning Zone 29  
Condo Fee \$362

EDMONTON. COPYRIGHT 2025 BY THE REALTORS® ASSOCIATION OF EDMONTON. ALL RIGHTS RESERVED. Trademarks are owned or controlled by the Canadian Real Estate Association (CREA) and identify real estate professionals who are members of CREA (REALTOR®, REALTORS®) and/or the quality of services they provide (MLS®, Multiple Listing Service®)

Listing information last updated on April 5th, 2025 at 2:32am MDT