

\$293,800 - 7408 7327 South Terwillegar Drive, Edmonton

MLS® #E4425178

\$293,800

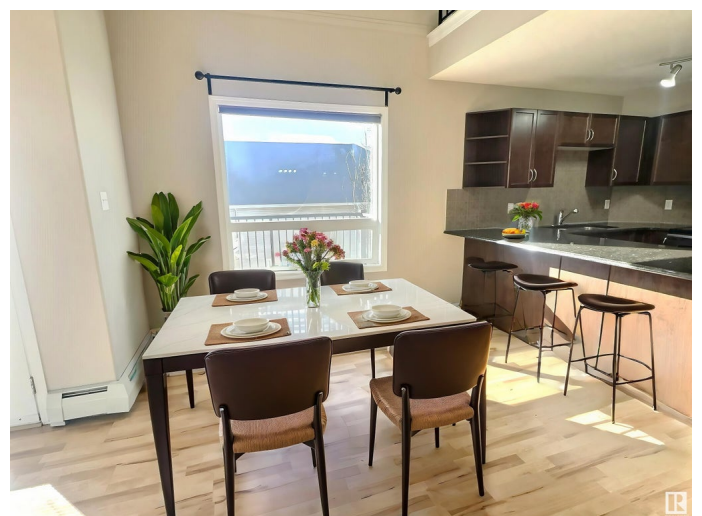
2 Bedroom, 2.00 Bathroom, 1,494 sqft
Condo / Townhouse on 0.00 Acres

South Terwillegar, Edmonton, AB

This Exclusive Corner Unit Penthouse Condo with 2nd level Loft features 17' Vaulted ceilings, large windows on both the North and West sides of the Property, and access to a sizable Balcony. Open Concept design, overlook the Grand living/ Dining room from the Kitchen complete with Modern Finishes, Warm wood cabinets, Granite Countertops with eating bar, and newer Stainless-Steel Appliances. A generous sized Primary Bedroom also offers a Walk-through Closet and 3piece Ensuite Bath. A second Bedroom, located on the other end of the unit, along with another 3piece bath. Loft space allows for an additional Flex Space, for a Home office, Yoga/ Home Gym, or a space to just Relax! The features don't end there, this property offers In-Suite Laundry, and 2-Titled Stalls, one Above and one Underground. Move-in Ready! Amazing Location; close to ALL the Amenities including, shopping + NEW FRESON BROS, restaurants, walking-trails, Schools, Public Transportation, and the A. Henday. HEAT & WATER INCLUDED! Pet Friendly!

Built in 2007

Essential Information



MLS® #	E4425178
Price	\$293,800
Bedrooms	2
Bathrooms	2.00
Full Baths	2
Square Footage	1,494
Acres	0.00
Year Built	2007
Type	Condo / Townhouse
Sub-Type	Lowrise Apartment
Style	Penthouse
Status	Active

Community Information

Address	7408 7327 South Terwillegar Drive
Area	Edmonton
Subdivision	South Terwillegar
City	Edmonton
County	ALBERTA
Province	AB
Postal Code	T6R 0L9

Amenities

Amenities	Parking-Extra, Parking-Visitor, Security Door, Vaulted Ceiling, See Remarks
Parking	Heated, Underground

Interior

Interior Features	ensuite bathroom
Appliances	Dishwasher-Built-In, Microwave Hood Fan, Refrigerator, Stacked Washer/Dryer, Stove-Electric, Window Coverings
Heating	Baseboard, Hot Water, Natural Gas
# of Stories	4
Stories	4
Has Basement	Yes
Basement	None, No Basement

Exterior

Exterior	Wood, Stone, Vinyl
----------	--------------------

Exterior Features	Airport Nearby, Corner Lot, Golf Nearby, Playground Nearby, Public Transportation, Schools, Shopping Nearby
Roof	Asphalt Shingles
Construction	Wood, Stone, Vinyl
Foundation	Concrete Perimeter

Additional Information

Date Listed	March 11th, 2025
Days on Market	28
Zoning	Zone 14
Condo Fee	\$751

DATA IS DEEMED RELIABLE BUT IS NOT GUARANTEED ACCURATE BY THE REALTORS® ASSOCIATION OF EDMONTON. COPYRIGHT 2025 BY THE REALTORS® ASSOCIATION OF EDMONTON. ALL RIGHTS RESERVED. Trademarks are owned or controlled by the Canadian Real Estate Association (CREA) and identify real estate professionals who are members of CREA (REALTOR®, REALTORS®) and/or the quality of services they provide (MLS®, Multiple Listing Service®)

Listing information last updated on April 8th, 2025 at 4:47am MDT