

Courtesy Of Pankaj Dua Of MaxWell Polaris

## \$234,900 - 219 5515 7 Avenue, Edmonton

MLS® #E4420807

**\$234,900**

2 Bedroom, 2.00 Bathroom, 893 sqft  
Condo / Townhouse on 0.00 Acres

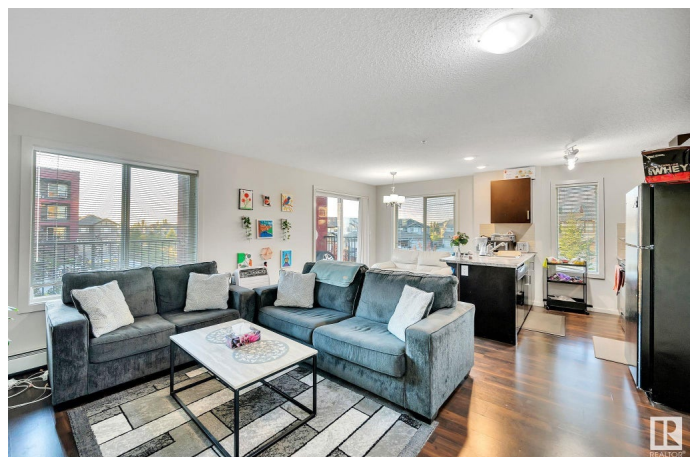
Charlesworth, Edmonton, AB

Welcome to **\*\*The Elements at Willowhaven\*\*** in Charlesworth, SW Edmonton! This original-owner CORNER unit offers over 890 sq ft of meticulously maintained living space, featuring 2 bedrooms and 2 bathrooms. Unit boasts vinyl plank flooring throughout, with cozy carpet in the bedrooms. Modern kitchen is fully equipped ample countertop space, and a stylish *\*tile backsplash\**. Spacious primary bedroom includes a walk-through closet with upgraded organizers, leading to a 4-PC en-suite bathroom. The second bedroom is generously sized, accompanied by a 3-piece main bath and *\*in-suite laundry\**. Step out onto the **HUGE COVERED PATIO** and enjoy the convenience of *\*2 parking spaces, 1 TITLED heated underground spot WITH STORAGE SPACE, and 1 surface-level space.* Located in a prime area, the building is within walking distance to grocery stores, gas stations, restaurants, a gym, public transit, and a playground. Plus, youâ€™™ have easy access to the Anthony Henday and other nearby amenities!

Built in 2014

### Essential Information

MLS® #	E4420807
Price	\$234,900



Bedrooms	2
Bathrooms	2.00
Full Baths	2
Square Footage	893
Acres	0.00
Year Built	2014
Type	Condo / Townhouse
Sub-Type	Lowrise Apartment
Style	Single Level Apartment
Status	Active

### Community Information

Address	219 5515 7 Avenue
Area	Edmonton
Subdivision	Charlesworth
City	Edmonton
County	ALBERTA
Province	AB
Postal Code	T6X 2A8

### Amenities

Amenities	Intercom, No Smoking Home, Parking-Plug-Ins, Parking-Visitor, Patio, See Remarks, Natural Gas BBQ Hookup
Parking Spaces	2
Parking	Heated, Stall, Underground

### Interior

Interior Features	ensuite bathroom
Appliances	Dishwasher-Built-In, Microwave Hood Fan, Refrigerator, Stacked Washer/Dryer, Stove-Electric
Heating	Baseboard, Electric
# of Stories	4
Stories	4
Has Basement	Yes
Basement	None, No Basement

### Exterior

Exterior	Wood, Vinyl
Exterior Features	Airport Nearby, Playground Nearby, Public Transportation, Shopping

	Nearby, See Remarks
Roof	Asphalt Shingles
Construction	Wood, Vinyl
Foundation	Concrete Perimeter

### **Additional Information**

Date Listed	February 7th, 2025
Days on Market	59
Zoning	Zone 53
Condo Fee	\$480

DATA IS DEEMED RELIABLE BUT IS NOT GUARANTEED ACCURATE BY THE REALTORS® ASSOCIATION OF EDMONTON. COPYRIGHT 2025 BY THE REALTORS® ASSOCIATION OF EDMONTON. ALL RIGHTS RESERVED. Trademarks are owned or controlled by the Canadian Real Estate Association (CREA) and identify real estate professionals who are members of CREA (REALTOR®, REALTORS®) and/or the quality of services they provide (MLS®, Multiple Listing Service®)

Listing information last updated on April 7th, 2025 at 2:47pm MDT