

\$329,900 - 12936 85 Street, Edmonton

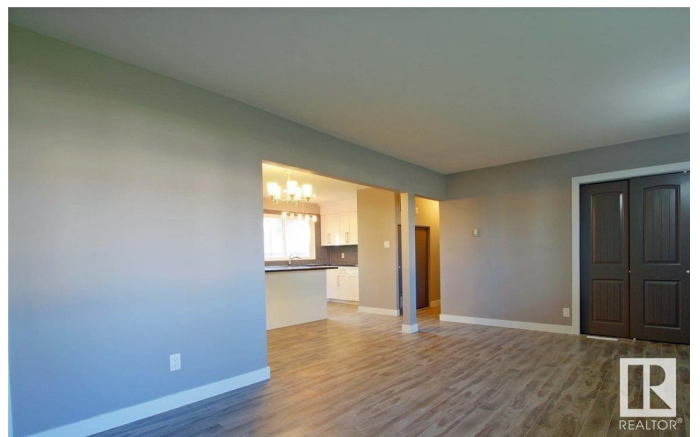
MLS® #E4412917

\$329,900

0 Bedroom, 2.00 Bathroom,
Single Family on 0.00 Acres

Killarney, Edmonton, AB

Massive lot Situated on a huge
50â€™™x150â€™™ RF4 lot in a family friendly
neighborhood. Buyers to buy as is as a lot



Essential Information

MLS® #	E4412917
Price	\$329,900
Bathrooms	2.00
Full Baths	2
Acres	0.00
Type	Single Family
Sub-Type	Vacant Lot/Land
Status	Active

Community Information

Address	12936 85 Street
Area	Edmonton
Subdivision	Killarney
City	Edmonton
County	ALBERTA
Province	AB
Postal Code	T5E 2Y9

Amenities

Parking	Parking Pad Cement/Paved
---------	--------------------------

Interior

Heating Natural Gas

Exterior

Exterior Features See Remarks

Additional Information

Date Listed November 6th, 2024

Days on Market 153

Zoning Zone 02

DATA IS DEEMED RELIABLE BUT IS NOT GUARANTEED ACCURATE BY THE REALTORS® ASSOCIATION OF EDMONTON. COPYRIGHT 2025 BY THE REALTORS® ASSOCIATION OF EDMONTON. ALL RIGHTS RESERVED. Trademarks are owned or controlled by the Canadian Real Estate Association (CREA) and identify real estate professionals who are members of CREA (REALTOR®, REALTORS®) and/or the quality of services they provide (MLS®, Multiple Listing Service®)

Listing information last updated on April 8th, 2025 at 5:47pm MDT