

Courtesy Of Kim Lillo Of MaxWell Polaris

## \$495,000 - 1401 12319 Jasper Avenue, Edmonton

MLS® #E4387491

**\$495,000**

2 Bedroom, 2.00 Bathroom, 1,660 sqft  
Condo / Townhouse on 0.00 Acres

W&hkw&ant&win, Edmonton, AB

INCREDIBLE PANORAMIC RIVER VALLEY VIEW from this desirable Glenora 14th floor unit. Adult living 45+ This 2 bedroom/ 2 bath unit is the largest floor plan. 1600+ sq ft spacious & well maintained by the original owner. Expansive view from the large south-facing deck overlooking the river valley & golf course w/ BBQ hookup. 2 titled underground stalls with built-in secure storage. Building amenities include social/recreation room, game room, exercise room, lovely private deck area, guest suite & underground visitor parking. Condo Fees include: gas, heat, air, power, cable, water, sewage & maintenance. Newer elevators and exterior upkeep recently completed. Easy access to transportation, shopping, restaurants, golf, river valley, sporting & concerts. Well maintained & managed property.

Built in 1989

### Essential Information

MLS® #	E4387491
Price	\$495,000
Bedrooms	2
Bathrooms	2.00
Full Baths	2
Square Footage	1,660
Acres	0.00



Year Built	1989
Type	Condo / Townhouse
Sub-Type	Apartment High Rise
Style	Single Level Apartment
Status	Active

### Community Information

Address	1401 12319 Jasper Avenue
Area	Edmonton
Subdivision	W&hkw&antwin
City	Edmonton
County	ALBERTA
Province	AB
Postal Code	T5N 4A7

### Amenities

Amenities	Air Conditioner, Deck, Exercise Room, Guest Suite, Hot Water Natural Gas, No Smoking Home, Parking-Extra, Parking-Visitor, Party Room, Secured Parking, Storage-In-Suite
Parking Spaces	2
Parking	Underground

### Interior

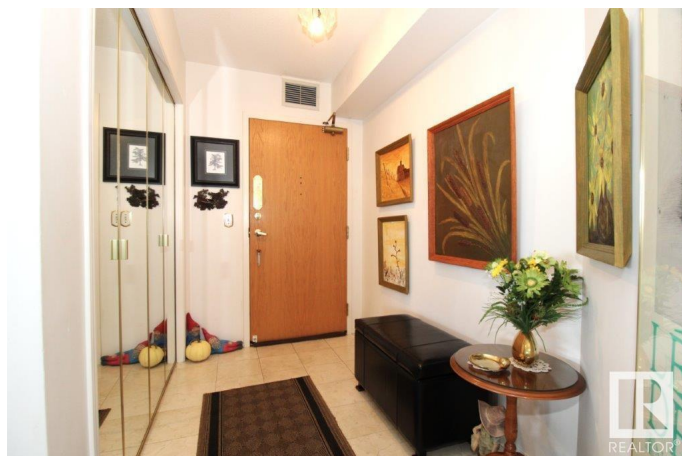
Interior Features	ensuite bathroom
Appliances	Dishwasher-Built-In, Oven-Microwave, Refrigerator, Stacked Washer/Dryer, Stove-Electric
Heating	Hot Water, Natural Gas
# of Stories	18
Stories	1
Has Basement	Yes
Basement	None, No Basement

### Exterior

Exterior	Concrete, Brick, Stucco
Exterior Features	Golf Nearby, Public Transportation, River Valley View, Shopping Nearby
Roof	Tar & Gravel
Construction	Concrete, Brick, Stucco
Foundation	Concrete Perimeter

### Additional Information

Date Listed May 15th, 2024  
Days on Market 330  
Zoning Zone 12  
Condo Fee \$1,267



DATA IS DEEMED RELIABLE BUT IS NOT GUARANTEED ACCURATE BY THE REALTORS® ASSOCIATION OF EDMONTON. COPYRIGHT 2025 BY THE REALTORS® ASSOCIATION OF EDMONTON. ALL RIGHTS RESERVED. Trademarks are owned or controlled by the Canadian Real Estate Association (CREA) and identify real estate professionals who are members of CREA (REALTOR®, REALTORS®) and/or the quality of services they provide (MLS®, Multiple Listing Service®)

Listing information last updated on April 10th, 2025 at 8:47am MDT